

Mobile Equipment Carriers

Knürr DacoMobile®

Page 4 to 19



Knürr DacoMobile® Strong points

• Stability

- Total load rating of up to 2100 N
- Worktops each with up to 800 N load rating
High stability with low-lying centre of gravity
- Distributed load drawer extension up to 200 N
- Torsional strength with stable aluminium extrusions on die-cast aluminium stabilizers and crosspiece of sheet steel
- Optimal stability for equipment set up in the trolley with raised edges all around the worktop

• Convenience

- Optimised operation with additional module components, such as
 - Cable duct
 - Rear panel
 - Euro mains distributor
 - Master switch
 - Socket strip

- Ergonomically optimal adjustment with
 - Keyboard extension
 - Pull-out shelves
- Effortless management of obstacles and uneven floors with Ø 125 mm large smooth-running castors
- Positioning with 2 lockable castors
- No marks and scratches on the doors, panels and fittings due to the integrated plastic bumper cap

• Variability

- Standard and ESD model components
- Modular designs enable numerous individual models
- Versatile applications ranging from the simple storage trolley to the complex laboratory station
- Simple and quick adjustment without special tools



MOB20095



MOB20053



MOB20096



MOB00274

Dimensions in mm: W = Width
H = Height
D = Depth
h = Installation height
d = Useful depth
L = Length

HU = Standard height unit, 1 HU = 44,45 mm
19" = 482,6 mm,
(ideal for 19" components in acc. with DIN 41494)
UP = Unit of packaging
kg = Weight

Conversion: 1 inch = 25,4 mm

Replace „x“ with the number of your color choice

P = assemble to order (shipped within 10 working days)

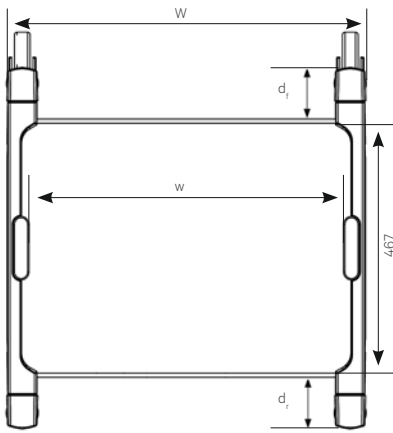
Caution: In case of larger orders, delivery times may increase.

Knürr DacoMobile® system components Technical data

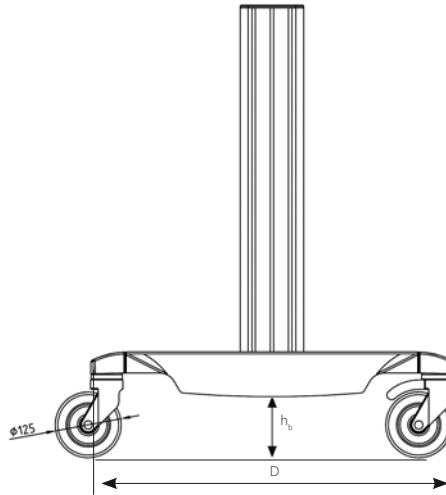
- Modules can be installed in 50 mm increments in height
- Smooth-running castors, Ø 125 mm, two with stoppers
- **Material**
 - Basic rack consists of:**
 - Extrusions: extruded aluminum
 - Runners: die-cast aluminum
 - Crosspiece: sheet steel
 - Worktop:**
 - sheet steel
 - Other modules:**
 - combination of sheet steel with laminated particle board, or sheet steel.
- **Finish**
 - Metal parts:**
 - powder-coated texture
 - Laminated sheet:**
 - fine-textured
- **Color**
 - Extrusions, runners, castors:**
 - RAL 5003, sapphire blue or RAL 7021 ESD or RAL 7035, light grey
 - Modules:**
 - RAL 7035, light grey
 - ESD castors:**
 - black
- **Maximum static load rating**
 - Per basic rack:**
 - 2,100 N
 - Per castor:**
 - 750 N
 - Surface load per worktop:**
 - up to 800 N
- **How supplied**
 - Fully assembled



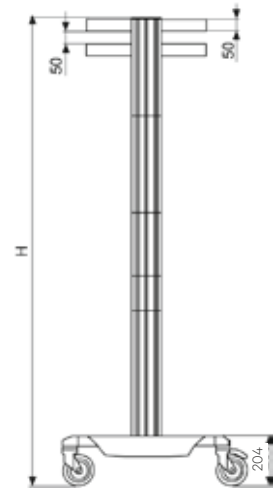
MOB20051



MOB20076



MOB20077



MOB20035

Installation position of the Knürr DacoMobile® elements in 50 mm increments, measured from above.

W (mm)	600	700
w (mm)	496	596

D = 680 mm
 h_b = 120 mm
 d_f = 97 mm
 d_r = 97 mm

Knürr DacoMobile® 1515

- **Material**
 - Worktops – sheet steel
 - Handle(s) – aluminum extrusion
 - Base unit crosspiece – sheet steel
- **Dimensions**
 - Height 1,515 mm
- **Color**
 - RAL 5003, sapphire blue /
 - RAL 7035, light grey
- **Supply schedule**
 - 1 basic rack
 - 2 handles
 - 4 worktops
- **How supplied**
 - Partially assembled

W	H	D	w	Order no.	UP
700	1515	685	596	00.106.628.2	1 unit



MOB20097

Mobile ESD-Measuring and Analysis Station

- **Color combination**
 - Worktop, RAL 7035, light grey
 - Extrusions and stabilizer, RAL 7021 black grey
- **Castor – Ø 125 mm**
- **Load rating**
 - **Basic rack:**
 - 2,100 N
 - **Per castor:**
 - 750 N
 - **Surface load per worktop:**
 - 800 N
- **Material / Finish**
 - **Basic rack consists of:**
 - Extrusions: extruded aluminum
 - Rockers: die-cast aluminum, powder-coated;
- **Supply schedule**
 - 1 ESD-basic rack
 - 2 ESD-worktop
 - 1 ESD-drawer
 - 1 ESD-handle
- **How supplied**
 - Assembled

W	H	D	w	d	Order no.	UP
700	860	685	596	490	00.115.620.9	1 unit



MOB20098

Dimensions in mm: W = Width
 H = Height
 D = Depth
 h = Installation height
 d = Useful depth
 L = Length

HU = Standard height unit, 1 HU = 44,45 mm
 19" = 482,6 mm,
 (ideal for 19" components in acc. with DIN 41494)
 UP = Unit of packaging
 kg = Weight

Conversion: 1 inch = 25,4 mm
 Replace „x“ with the number of your color choice

Knürr DacoMobile® Basic Rack

• Finish

Replace „x“ with the number of your color choice.

Final digit of order number .1:

- Vertical extrusions, die-cast aluminium runners RAL 7035 light grey
- Bottom frame cover RAL 7035 light grey
- Castors, bumper-caps and end-caps black

Final digit of order number .2:

- Vertical extrusions, die-cast aluminium runners RAL 5003 sapphire blue
- Bottom frame cover RAL 7035 light grey
- Castors, bumper-caps and end-caps black
- RAL 5003 sapphire blue

ESD finish .9:

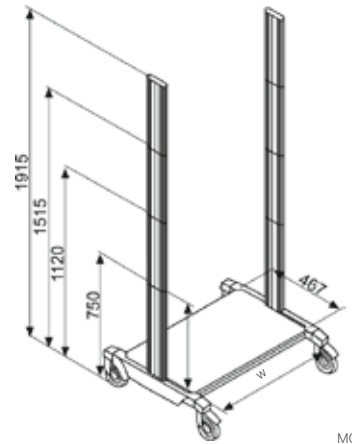
- Vertical extrusions, die-cast aluminum runners RAL7021 black grey, ESD bottom cover RAL 7035, light grey, ESD
- Conductive castors, impact protection caps and end-caps, black

• Supply schedule

- 1 bottom cover made of sheet steel
- 2 die-cast aluminum runners with plastic bumper caps
- 4 smooth-running castors – Ø 125 mm, 2 with snib
- 2 vertical aluminum extrusions with threaded strips for mounting the modules

Design your own individual equipment carrier as follows:

1. Choose ESD or Standard
2. Select a width
3. Select the height of the basic rack
4. Choose the appropriate accessories on the following pages



MOB20034

W	H	w	ESD	Order no.	UP
600	750	496		00.101.505.x	1 unit
600	750	496	•	00.101.614.9	1 unit
700	750	596		00.101.605.x	1 unit
700	750	596	•	00.101.615.9	1 unit
600	1120	496		00.103.505.x	1 unit
600	1120	496	•	00.103.614.9	1 unit
700	1120	596		00.103.605.x	1 unit
700	1120	596	•	00.103.615.9	1 unit
600	1515	496		00.104.505.x	1 unit
600	1515	496	•	00.104.614.9	1 unit
700	1515	596		00.104.605.x	1 unit
700	1515	596	•	00.104.615.9	1 unit
600	1915	496		00.105.505.x	1 unit
600	1915	496	•	00.105.614.9	1 unit
700	1915	596		00.105.605.x	1 unit
700	1915	596	•	00.105.615.9	1 unit



MOB00333

Knürr DacoMobile® Cable Duct Large

- With convenient hinged cover with two quicklocks
- Separate cable routing via mounting strip
- Cable exit via sealing lips at any height
- Can be mounted left or right

• Material

- Sheet steel, powder-coated RAL 7035, light grey, antistatic
- ESD: RAL 7021, black-grey, antistatic

• Supply schedule

- 1 cable duct
- Mounting material

W	H	D	ESD	Order no.	UP
85	1120	190		00.118.014.1	1 unit
85	1515	190		00.118.015.1	1 unit
85	1915	190		00.118.016.1	1 unit
85	1120	190	•	00.118.214.9	1 unit
85	1515	190	•	00.118.215.9	1 unit
85	1915	190	•	00.118.216.9	1 unit



MOB20057

Knürr DacoMobile® Castor Set

- Load capacity: 750 N per castor – ø 125 mm
- **Color**
 - **Standard castors:**
 - RAL 5003, sapphire blue
 - **ESD:**
 - Black
- **Supply schedule**
 - 4 smooth-running castors
 - 2 with stopper

ESD	Order no.	UP
	00.128.965.2	1 unit
•	00.128.975.9	1 unit

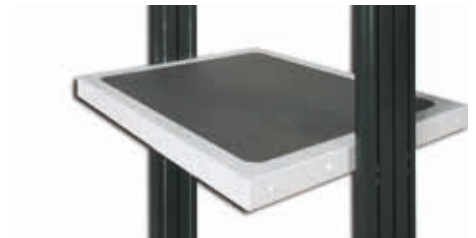


MOB20067

Knürr DacoMobile® Worktop

- **Material**
 - Sheet steel, powder-coated
- **Color**
 - RAL 7035, light grey
- **ESD version:**
 - RAL 7035, light grey, ESD
- **Supply schedule**
 - 1 worktop
 - Mounting material
- **Note**
 - Please order handle and anti-slide mats separately.

H	D	w	Model	ESD	Order no.	UP
50	490	496	Sheet steel		00.101.530.1	1 unit
50	490	596	Sheet steel		00.101.630.1	1 unit
50	490	496	Sheet steel, ESD	•	00.101.540.1	1 unit
50	490	596	Sheet steel, ESD	•	00.101.640.1	1 unit



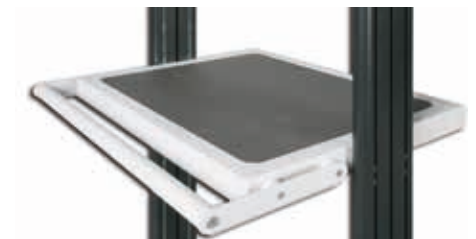
version: sheet steel

MOB20071

Knürr DacoMobile® Worktop Handle

- For sheet steel worktops
- Can be mounted from front and/or rear
- **Material**
 - Sheet steel
 - Aluminum extrusion handle
- **Color**
 - RAL 7035, light grey
- **ESD:**
 - RAL 7021, dark grey, antistatic
- **Supply schedule**
 - 1 handle
 - 2 mounting brackets
 - Mounting material

w	Model	ESD	Order no.	UP
496	Dacomobile worktop handle		00.101.045.1	1 unit
596	Dacomobile worktop handle		00.101.050.1	1 unit
496	Dacomobile worktop handle ESD	•	00.101.145.1	1 unit
596	Dacomobile worktop handle ESD	•	00.101.150.1	1 unit



MOB20070

Dimensions in mm: W = Width
 H = Height
 D = Depth
 h = Installation height
 d = Useful depth
 L = Length

HU = Standard height unit, 1 HU = 44.45 mm
 19" = 482.6 mm, (ideal for 19" components in acc. with DIN 41494)
 UP = Unit of packaging
 kg = Weight

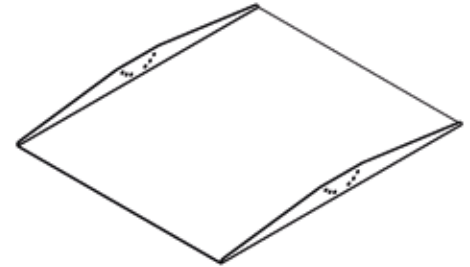
Conversion: 1 inch = 25.4 mm
 Replace „x“ with the number of your color choice

Tiltable Mounting Plate

- Universal mounting plate. Can be mounted in three different angle positions
 - Maximum static surface load: 20kg
- Material**
- Sheet-steel, powder-coated

- **Finish**
 - RAL 7035 light grey
- **Supply schedule**
 - 1 mounting plate
 - Mounting material

D	w	Order no.	UP
600	496	00.101.134.1	1 unit
600	596	00.101.135.1	1 unit
700	496	00.101.137.1	1 unit
700	596	00.101.138.1	1 unit



MOB20132

Knürr DacoMobile® Cross Extrusion

- For cross-bracing the basic rack with heavy components or with high carts
- Material**
- Sheet steel, powder-coated
- Finish**
- Final digit of order number .1:**
- RAL 7035 light grey

- Final digit of order number .2:**
- RAL 5003 sapphire blue
- Final digit of order number .9:**
- ESD version, RAL 7021 black grey ESD

- **Supply schedule**
 - 1 cross extrusion
 - Mounting material

w	Model	ESD	Order no.	UP
496	Sheet steel		00.122.510.X	1 unit
596	Sheet steel		00.122.611.X	1 unit
496	Sheet steel, ESD	•	00.122.510.9	1 unit
596	Sheet steel, ESD	•	00.122.611.9	1 unit



MOB20063

Knürr DacoMobile® Telescopic shelf

- ESD or standard version
 - Shelf with telescopic slides
 - Locking in closed an extended position
 - Maximum static load: 22kg
- Material**
- Sheet steel, powder-coated
 - Tray handle – plastic

- **Color**
 - Extension board, RAL 7035 light grey, antistatic
 - Standard tray handle, RAL 7035 light grey
 - ESD handle, black

- **Supply schedule**
 - 1 Telescopic shelf, pre-assembled
 - Mounting material

H	D	w	Model	ESD	Order no.	UP
50	490	496	Sheet steel		00.125.525.2	1 unit
50	490	596	Sheet steel		00.125.625.2	1 unit
50	490	496	Sheet steel, ESD	•	00.125.530.1	1 unit
50	490	596	Sheet steel, ESD	•	00.125.630.1	1 unit



MOB20050

Dimensions in mm: W = Width
 H = Height
 D = Depth
 h = Installation height
 d = Useful depth
 L = Length

HU = Standard height unit, 1 HU = 44,45 mm
 19"= 4826 mm,
 (ideal for 19" components in acc. with DIN 41494)

UP = Unit of packaging
 kg = Weight

Conversion: 1 inch = 25,4 mm

Replace „x“ with the number of your color choice

Knürr DacoMobile® Keyboard Extension Closed

- ESD or standard version
 - Closed sheet steel carcass
 - Main unit cover recessed for optional anti-slide mats
 - Extension board with telescopic slides
 - Mouse table can be moved to the left or right with or without lock
 - Maximum static load for telescopic shelf: 10kg
- **Material**
 - Sheet steel, powder-coated
 - Tray handle – plastic
- **Color**
 - Main unit, extension board, mouse table: RAL 7035, light grey, antistatic
 - Standard tray handle, RAL 7035, light grey
 - ESD handle, black
 - **Supply schedule**
 - 1 keyboard extension, closed, with mouse table
 - Mounting material

H	D	w	Model	ESD	Order no.	UP
100	490	496	With loc		00.127.516.2	1 unit
100	490	596	With loc		00.127.616.2	1 unit
100	490	496	With loc	•	00.127.526.1	1 unit
100	490	596	With loc	•	00.127.626.1	1 unit



MOB20074

Knürr DacoMobile® Drawer Module

- ESD or standard version
 - With or without lock
 - Height – 100 or 150 mm
 - Sheet steel main unit
 - Main unit cover with depression for optional anti-slide mats
 - Maximum static load: 10 kg for drawer 20 kg for corpus
- **Material**
 - Sheet steel, powder-coated
 - Tray handle – plastic
- **Color**
 - Main unit, drawer: RAL 7035, light grey, antistatic
 - Tray handle: Standard RAL 7035, light grey
 - ESD handle: Black
 - **Supply schedule**
 - 1 drawer module
 - Mounting material

H	D	w	Model	ESD	Order no.	UP
100	490	496	With lock		00.117.536.2	1 unit
100	490	596	With lock		00.117.616.2	1 unit
100	490	496	With lock	•	00.117.526.1	1 unit
100	490	596	With lock	•	00.117.626.1	1 unit
150	490	496	With lock		00.117.538.2	1 unit
150	490	596	With lock		00.117.618.2	1 unit
150	490	496	With lock	•	00.117.528.1	1 unit
150	490	596	With lock	•	00.117.628.1	1 unit



MOB20072



MOB20073

Knürr DacoMobile® Storage Tray

- Tray for paper, cables or small parts
 - Height 80 mm
 - With perforation Ø 8 mm
- **Material**
 - Sheet steel, powder-coated
- **Color**
 - RAL 7035, light grey, antistatic
 - **Supply schedule**
 - 1 storage tray
 - Mounting material

H	D	w	Model	ESD	Order no.	UP
80	490	496	ESD	•	00.111.512.1	1 unit
80	490	596	ESD	•	00.111.612.1	1 unit



MOB20068

Knürr DacoMobile® Mounting Kit, Fixed For 19" DoubleProRack Enclosures

- Installation option for two different enclosure depths in the basic rack
- Maximum static load rating, 800 N
- Only for Knürr DacoMobile® width 600 mm!
- Only for Knürr DoubleProRack Enclosure Width 600; depth 500 mm, 600 mm, 700 mm

- **Supply schedule**
 - 1 pair of mounting brackets
- **Note**

More information on 'DoubleProRack':

 - www.pdb.knuerr.com

W	H	D	Order no.	UP
		500	00.101.130.1	1 unit
		600	00.101.131.1	1 unit
		700	00.101.132.1	1 unit



MOB20067



MOB20082

Spacer set for DoubleProRack

- Recommended for DoubleProRack enclosures, mounted in DacoMobile® trolley to stabilize the enclosure
- **Material**
 - Aluminium extrusion, powder-coated RAL 7035 light grey
- **Supply schedule**
 - 2x spacer 20mm length
 - 2x Cylinder head screw M6x60
 - 2x Spring nut M6
 - 2x Star washer 6.4mm

W	H	D	Order no.	UP
			00.101.016.1	1 unit



MOB20133



MOB20134

Vertiv™ Knürr® DoubleProRack® 19" Stand-alone Enclosure

Description

- For components compliant with IEC 297-3
- Side covers and rear panel may be removed
- Flexible assembly of components using T-slot (also available with mounting holes)
- Cable entry via rear panel
- Heat loss discharge via convection on the rear panel (optional with fan unit)

Jumpering space

- Front 125 mm

Load rating

- 1500 N static

Protection rating

- IP 20

Material / Finish

- Covers, sheet steel, powder-coated texture
- Die-cast aluminum frame
- Extruded aluminum extrusions
- Front door glass infill, single safety glass panel

Color

- Panels RAL 7035 light grey
- Frame and extrusions, RAL 5008, grey-blue

Scope of delivery

- 1 x frame rack incl. side covers
- 1 x full glass door
- 1 x rear panel with cable entry, 3 parts
- 1 x panel, above, with vent slots
- 1 x panel, below, with vent slots
- 1 x 19" component set (4 vertical extrusions with T-slot)
- 1 x grounding set with M8 grounding bolt

How supplied

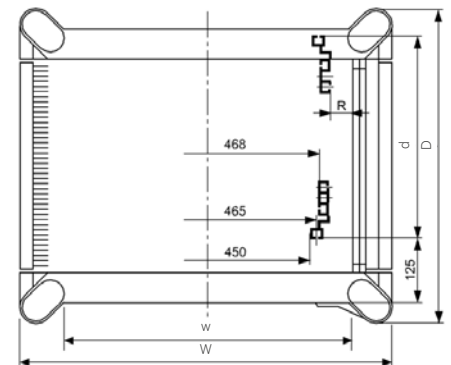
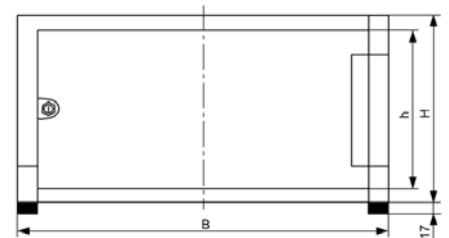
- Assembled

Note

- When using a DoublePro rack in combination with a DacoMobile, we recommend to choose the DacoMobile in color combination .1 (light grey)



DOP00256



DOP00230

W	H	D	U	h	d (max.)	Model	Order no.	UP
554.4	577	600	12	532	435	With full glass door	01.246.643.1	1 unit
554.4	711	600	15	666	435	With full glass door	01.246.644.1	1 unit
554.4	844	600	18	799	435	With full glass door	01.246.645.1	1 unit
554.4	978	600	21	932	435	With full glass door	01.246.646.1	1 unit
554.4	1111	600	24	1066	435	With full glass door	01.246.647.1	1 unit

Dimensions in mm: W = Width
 H = Height
 D = Depth
 h = Installation height
 d = Useful depth
 L = Length

HU = Standard height unit, 1 HU = 44,45 mm
 19" = 482,6 mm, (ideal for 19" components in acc. with DIN 41494)
 UP = Unit of packaging
 kg = Weight

Conversion: 1 inch = 25,4 mm
 Replace „x“ with the number of your color choice

Vertiv™ Knürr® DoubleProRack® 19" Enclosure without Front Door

Description

- For components compliant with IEC 297-3
- Side covers and rear panel may be removed
- Heat loss discharge via convection on the rear panel (optional with fan unit)

Load rating

- 1500 N static

Protection rating

- IP 20

Material / Finish

- Covers, sheet steel, powder-coated texture
- Die-cast aluminum frame
- Extruded aluminum extrusions

Color

- Panels RAL 7035 light grey
- Frame and extrusions, RAL 5008, greyblue

Scope of delivery

- 1 x frame rack incl. side covers
- 1 x panel, above, with vent slots
- 1 x panel, below, with vent slots
- 1 x rear panel (from 12 U enclosure height incl. 3 U vented cover plate)
- 2 x 19" extrusions, front, with mounting holes
- 2 x 19" extrusions at the rear, T-slot

How supplied

- Assembled

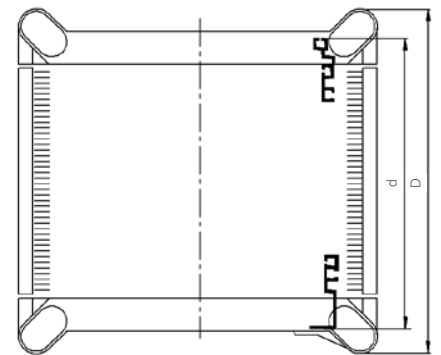
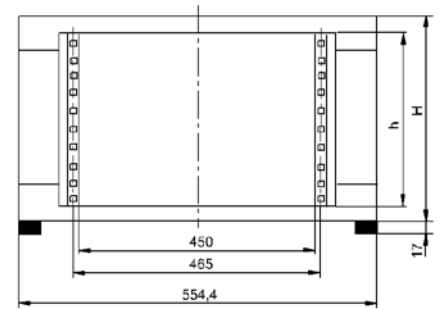
Note

- When using a DoublePro rack in combination with a DacoMobile, we recommend to choose the DacoMobile in color combination .1 (light grey)



DOP00253

W	H	D	U	h	d (max.)	Kg	Model	Order no.	UP
554.4	311	500	6	265	460	12.5	Without door	01.243.506.1	1 unit
554.4	444	500	9	399	460	15.0	Without door	01.243.509.1	1 unit
554.4	577	500	12	532	460	17.0	Without door	01.243.512.1	1 unit
554.4	711	500	15	666	460	19.5	Without door	01.243.515.1	1 unit
554.4	311	600	6	265	560	14,0	Without door	01.243.606.1	1 unit
554.4	444	600	9	399	560	16.5	Without door	01.243.609.1	1 unit
554.4	577	600	12	532	560	19.0	Without door	01.243.612.1	1 unit
554.4	711	600	15	666	560	22.0	Without door	01.243.615.1	1 unit
554.4	844	600	18	799	560	24.5	Without door	01.243.618.1	1 unit
554.4	978	600	21	932	560	27.0	Without door	01.243.621.1	1 unit
554.4	1111	600	24	1066	560	29.5	Without door	01.243.624.1	1 unit
554.4	577	700	12	532	660	21.5	Without door	01.243.712.1	1 unit
554.4	711	700	15	666	660	24.0	Without door	01.243.715.1	1 unit
554.4	844	700	18	799	660	27.0	Without door	01.243.718.1	1 unit
554.4	978	700	21	932	660	29.5	Without door	01.243.721.1	1 unit
554.4	1111	700	24	1066	660	32.5	Without door	01.243.724.1	1 unit



DOP00052

Dimensions in mm:

W = Width
H = Height
D = Depth
h = Installation height
d = Useful depth
L = Length
HU = Standard height unit, 1 HU = 44.45 mm
19" = 482.6 mm, (ideal for 19" components in acc. with DIN 41494)
UP = Unit of packaging
kg = Weight

Conversion:

1 inch = 25.4 mm

Replace „x“ with the number of your color choice

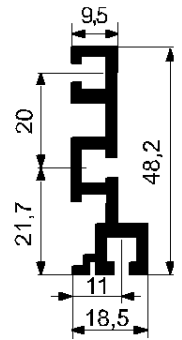
Vertiv™ Knürr® DoubleProRack® 19" Installation, Front with T-slot

- Can also be used as second mounting level
- **Material**
 - Aluminum extrusions
- **Finish**
 - Polished
- **Scope of delivery**
 - 2 x 19" extrusions at the front, T-slot
 - 1 x Mounting kit
- **How supplied**
 - In sets

U	Order no.	UP
6	01.240.440.9	1 set
9	01.240.443.9	1 set
12	01.240.445.9	1 set
15	01.240.446.9	1 set
18	01.240.447.9	1 set
21	01.240.448.9	1 set
24	01.240.449.9	1 set



DOP20004



DOP00313

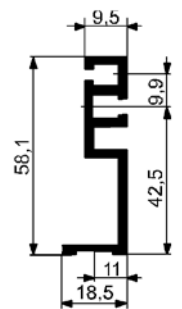
Vertiv Knürr DoubleProRack 19" Installation, Front with Mounting Holes

- Can also be used as second mounting level
- **Material**
 - Extruded aluminum extrusions
- **Finish**
 - Polished
- **Scope of delivery**
 - 2 x 19" extrusions at the front, mounting holes
- **How supplied**
 - In sets

U	Order no.	UP
6	01.240.490.9	1 set
9	01.240.493.9	1 set
12	01.240.495.9	1 set
15	01.240.496.9	1 set
18	01.240.497.9	1 set
21	01.240.498.9	1 set
24	01.240.499.9	1 set



DOP20005



DOP00055

Vertiv Knürr DoubleProRack Fan Rear Panel 3 U

- With axial fans
- With thermostat
- **Technical data for single fan**
 - Max. volume flow (free blowing):**
 - 162 m³/h
 - Noise emission (free blowing):**
 - 37 dB(A)
- **Technical data for thermostat**
 - Setting range:**
 - 0 to 60°C
 - Mains supply:**
 - 240 V / 50 Hz
 - Nominal current:**
 - 16 A
- **Scope of delivery**
 - 1 x fan rear panel, wired
 - 1 x Mounting kit
- **Finish / Color**
 - Powder-coated texture, RAL 7035 light grey
- **How supplied**
 - Assembled
- **Note**
 - Cannot be used in the enclosure's lowest U



DOP20035



DOP20036

W	H	U	Model	Order no.	UP
554.4	132.5	3	With thermostat	01.243.428.1	1 unit

Vertiv Knürr DoubleProRack Rear Panel, closed

- For DoubleProRack width 554.4 mm
- **Material / Finish**
 - Sheet steel, 0.8 mm, powder-coated texture
- **Color**
 - RAL 7035, light grey

- **Scope of delivery**
 - 1 x rear panel, closed
 - 1 x Mounting kit
- **How supplied**
 - In sets

W	U	Order no.	UP
554.4	6	01.240.454.1	1 unit
554.4	9	01.240.457.1	1 unit
554.4	12	01.240.459.1	1 unit
554.4	15	01.240.460.1	1 unit
554.4	18	01.240.461.1	1 unit
554.4	21	01.240.462.1	1 unit



DOP00275

Vertiv™ Knürr® DoubleProRack® Connection Panel with Brush Strip

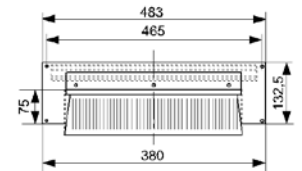
- To cover rear panel along with the corresponding rear panel shortened by 3 U
- For DoubleProRack width 554.4 mm
- With brush strip for cable routing and strain relief
- **Finish / Color**
 - Powder-coated texture, RAL 7035 light grey

- **Scope of delivery**
 - 1 x connection plate
 - 1 x Mounting kit
- **How supplied**
 - In sets

W	H	U	Order no.	UP
554.4	132.5	3	01.243.438.1	1 unit



DOP00274



DOP00288

Grounding Bar

- For safe grounding or potential equalization of equipment and components
- **Material**
 - Electrolyte copper 9 x 9

- **Scope of delivery**
 - 1 x grounding bar
 - 2 x brackets
 - 1 x Mounting kit

U	Order no.	UP
12	01.110.703.9	1 unit
21	01.240.545.9	1 unit

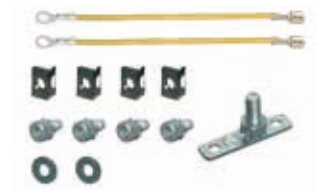


ELM00068

Vertiv Knürr DoubleProRack Grounding Set for Enclosures

- For grounding top/bottom cover
- With central grounding bolt
- **Scope of delivery**
 - 2 x grounding connections, length 250 mm
 - 4 x spring nuts, M5
- **How supplied**
 - 2 x washers
 - 4 x cylinder screws, M5 x 10
 - 1 x grounding bolt
 - In sets

Order no.	UP
01.243.400.9	1 set



MEC20122

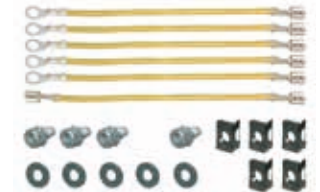


DOP20025

Vertiv Knürr DoubleProRack Grounding Set for Doors and Trims

- For grounding doors and/or cover plates
- **Scope of delivery**
 - 5 x grounding connections, length 250 mm
 - 1 x grounding connection, 250 mm, two-sided AMP plug
 - 5 x spring nuts, M5
- **How supplied**
 - 5 x cylinder screws, M5 x 10 with tooth-lock washer
 - 5 x washers
 - In sets

Order no.	UP
01.245.400.9	1 set



MEC20123



DOP00286

Contact Clamp

- Enables safe connection of equipment and components to grounding bar
- For cables up to 25 mm
- **Scope of delivery**
 - 120 x contact clamps

Order no.	UP
01.110.715.9	20 units



DOP20016

Dimensions in mm: W = Width
 H = Height
 D = Depth
 h = Installation height
 d = Useful depth
 L = Length

HU = Standard height unit, 1 HU = 44.45 mm
 19" = 482.6 mm,
 (ideal for 19" components in acc. with DIN 41494)
 UP = Unit of packaging
 kg = Weight

Conversion: 1 inch = 25.4 mm
 Replace „x“ with the number of your color choice

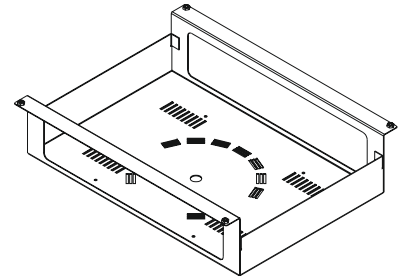
ESD mounting set for isolating transformer

- Tray: Mount on underside of base unit
- Secure fixing of the isolating transformers
- With ventilation perforations
- **Material**
 - Sheet steel, powder-coated
- **Color**
 - RAL 7035, light grey, antistatic
- **Supply schedule**
 - 1 mounting set
 - Mounting material
- **Note**
 - **Only for Knürr Dacomobile:**
W 696 mm, w 596 mm

W	H	D	Model	Order no.	UP
520	120	350	Tray	00.101.262.1	1 unit



MOB20064



Knürr DacoMobile® Master Switch Module

- For mounting on the vertical extrusions
- With lit on/off switch, white
- Pre-wired with H05VV-F3G cable, 1.5 mm²
- Sheet steel, powder-coated
- **Color**
 - **Standard:**
 - RAL 7035, light grey, antistatic
- **Supply schedule**
 - 1 master switch module
 - Mounting material

W	H	D	Order no.	UP
40	76	90	00.118.001.1	1 unit

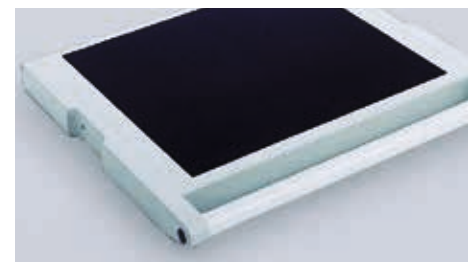


MOB20048

Knürr DacoMobile® Rubber Mat

- **Material**
 - Self-adhesive rubber-mat made of open pore sponge rubber
- **Colour**
 - Standard: grey, ESD: black

W	w	Model	ESD	Order no.	UP
600	496	Standard, for sheet-steel table top and drawer unit top		00.101.195.0	1 unit
700	596	Standard, for sheet-steel table top and drawer unit top		00.101.200.9	1 unit
600	496	Standard, for sheet-steel keyboard extension open		00.101.196.0	1 unit
700	596	Standard, for sheet-steel keyboard extension open		00.101.202.9	1 unit
600	496	ESD, for sheet-steel tabletop and drawer unit top	•	00.101.198.0	1 unit
700	596	ESD, for sheet-steel tabletop and drawer unit top	•	00.101.208.9	1 unit
600	496	ESD, for sheet-steel keyboard extension open	•	00.101.199.0	1 unit
700	596	ESD, for sheet-steel keyboard extension open	•	00.101.210.9	1 unit



MOB00298

Dimensions in mm: W = Width
H = Height
D = Depth
h = Installation height
d = Useful depth
L = Length

HU = Standard height unit, 1 HU = 44.45 mm
19" = 482.6 mm,
(ideal for 19" components in acc. with DIN 41494)
UP = Unit of packaging
kg = Weight

Conversion: 1 inch = 25,4 mm
Replace „x“ with the number of your color choice

Knürr DacoMobile® 19"

- **Color**
 - RAL 5003, sapphire blue / RAL 7035 light grey
- **Supply schedule**
 - 1 Basic rack
 - 1 Cross extrusion
- **How supplied**
 - 2 19" Extrusions
 - 10 Chassis runners
 - Part assembled

W	H	D	HU/U	h	Order no.	UP
606	1865	685	36	1600	01.316.016.2	1 unit
606	2000	685	39	1733	01.316.019.2	1 unit



MOB00402

Knürr DacoMobile® Chassis Runner Set For mounting 19" equipment

- **Material**
 - Sheet steel, zinc passivated
- **Supply schedule**
 - 2 Chassis runners
 - Mounting material
- **Dimensions**
 - Length:**
 - 200 mm
 - Thickness:**
 - 2 mm
 - Angle bracket:**
 - 44 x 50 mm

W	H	D	Order no.	UP
50	44	200	01.316.026.7	1 unit



MOB00336



knürr
World of control rooms

knuerr-consoles.com | Knürr GmbH, Mariakirchener Straße 38, 94424 Arnstorf, Germany ID-Nr. DE 363797731

© 2024 Knürr GmbH. All rights reserved. Knürr® and the Knürr logo are trademarks or registered trademarks of Knürr GmbH. All other names and logos referred to are trade names, trademarks or registered trademarks of their respective owners. While every precaution has been taken to ensure accuracy and completeness herein, Knürr GmbH assumes no responsibility, and disclaims all liability, for damages resulting from use of this information or for any errors or omissions. Specifications are subject to change without notice.

09.991.042.0.000001 • MKA4LOUKarts Rev.3-01/2024